



---

# IS CAR T THERAPY AN OPTION FOR ME?

**UNDERSTAND THE  
TREATMENT PATH FOR  
CERTAIN TYPES OF  
NON-HODGKIN LYMPHOMA**

Review this guide with your oncologist to discuss your treatment options and when YESCARTA® CAR T therapy may be an option for you.

YESCARTA is a treatment for your non-Hodgkin lymphoma. It is used when you have failed at least two other kinds of treatment. YESCARTA is different than other cancer medicines because it is made from your own white blood cells, which have been modified to recognize and attack your lymphoma cells.

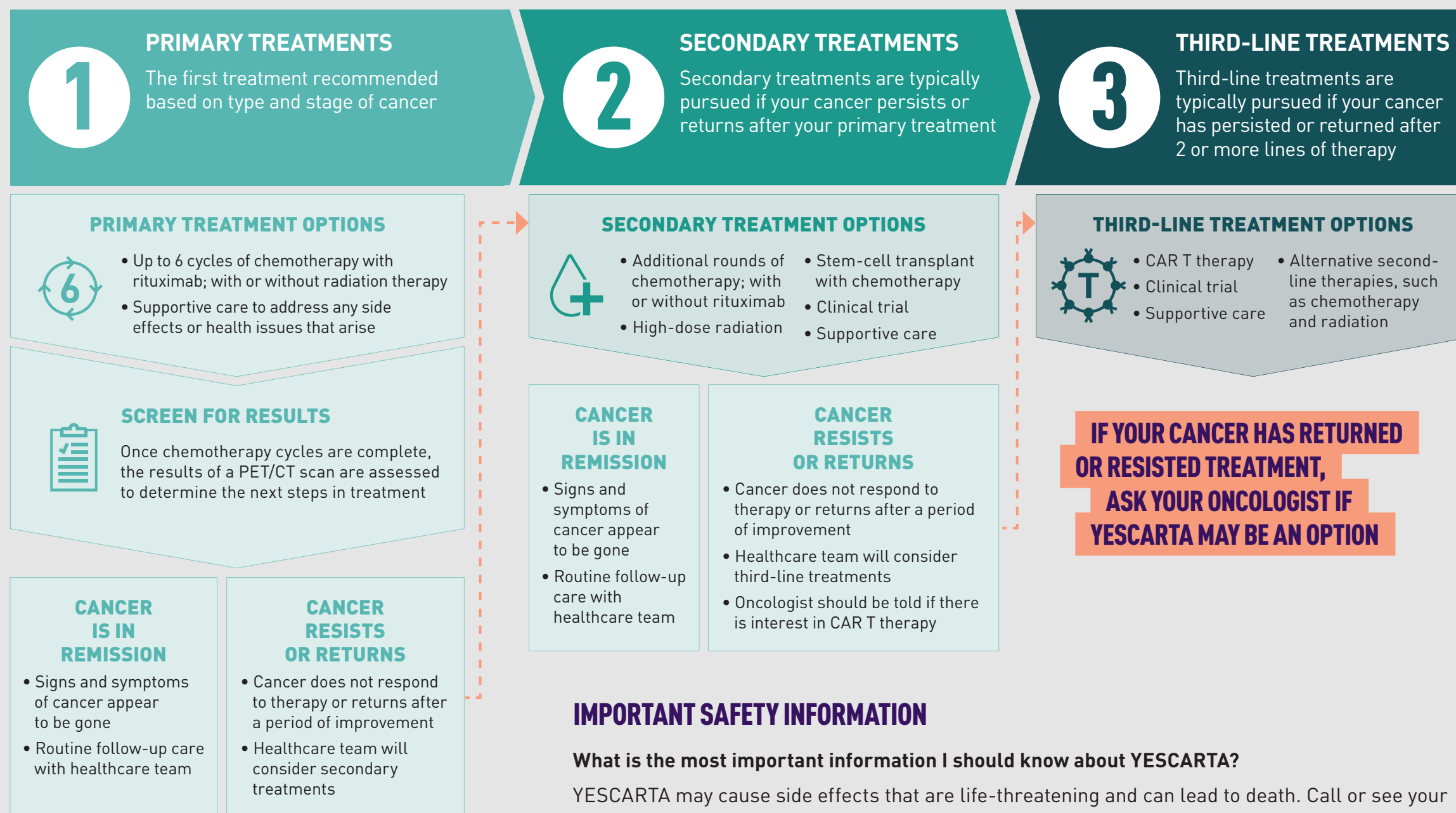
Please see **Important Safety Information** throughout this brochure.

 **YESCARTA**<sup>®</sup>  
(axicabtagene ciloleucel) Suspension  
for IV infusion

# WHEN OTHER TREATMENTS HAVE FAILED, YESCARTA® CAR T THERAPY IS AN OPTION

The treatment that's right for you can depend on the type and stage of your cancer, your overall health, and your personal preferences. In some cases, you may need multiple phases and types of therapy. It's important to know that even if your cancer requires more than an initial treatment, you have options.

**YESCARTA CAR T therapy is an FDA-approved option when primary and secondary treatments have failed.** Understanding the path to YESCARTA can help you play an active role in treatment decisions with your healthcare team.



## IMPORTANT SAFETY INFORMATION

### What is the most important information I should know about YESCARTA?

YESCARTA may cause side effects that are life-threatening and can lead to death. Call or see your healthcare provider or get emergency help right away if you get any of the following:

- Fever (100.4°F/38°C or higher)
- Difficulty breathing
- Chills or shaking chills
- Confusion
- Dizziness or lightheadedness
- Severe nausea, vomiting, or diarrhea
- Fast or irregular heartbeat
- Severe fatigue or weakness

It is important to tell your healthcare provider that you received YESCARTA and to show them your YESCARTA Patient Wallet Card. Your healthcare provider may give you other medicines to treat your side effects.

Please see additional **Important Safety Information** throughout this brochure.



# TREATMENT TERMS TO KNOW

Below is a list of medical terms that are commonly used by healthcare professionals when discussing therapy options.

## PRIMARY TREATMENT (OR FIRST-LINE THERAPY)

The first treatment recommended for your type of cancer. This treatment is usually what has worked best for people with the same type and stage of cancer as you.

## SECONDARY TREATMENT (OR SECOND-LINE THERAPY)

Treatment that is given when your primary treatment fails to work or stops working.

## THIRD-LINE THERAPY

Treatment that is given when both primary and secondary treatments fail to work or stop working.

## COMPLETE REMISSION

The disappearance of all signs of cancer in response to treatment. This does not always mean the cancer has been cured.

## PARTIAL REMISSION

A decrease in the size of a tumor, or in the extent of cancer in the body, in response to treatment.

## RELAPSE

When your cancer returns after a period of improvement.

## REFRACTORY

Cancer that does not improve with treatment.

## STEM CELL TRANSPLANT

A procedure that replaces cells that have been damaged due to cancer, or cancer treatments, with healthy stem cells. Healthy stem cells are taken from your bone marrow before beginning chemotherapy and replaced after. You may also receive healthy stem cells from a donor. These healthy stem cells form new bone marrow and blood cells.

A stem cell transplant is only an option if your cancer has responded to primary or secondary treatments. Before receiving a stem cell transplant, you will undergo an intense conditioning regimen, such as high-dose chemotherapy, in order to destroy as many cancer cells as possible. Unfortunately, some patients are not healthy enough for a stem cell transplant to be a treatment option. In this case, other therapies may still be an option for you.

## CLINICAL TRIAL (OR CLINICAL STUDY)

New cancer treatments are studied in clinical trials to determine if they are effective and to understand the possible side effects. These new treatments are usually available for people until the results of the study are reviewed and approved by the FDA.

## IMMUNOTHERAPY

A type of therapy that stimulates the immune system to improve your body's ability to find and destroy cancer cells.

## CAR T THERAPY

CAR T stands for Chimeric Antigen Receptor T-cell therapy, which is a form of immunotherapy. With CAR T therapy, your immune system's T cells are modified to recognize and destroy cancer cells.

CAR T therapy is an option if your primary and secondary treatments failed to eliminate your cancer, or if your cancer has returned after these treatments. Before receiving CAR T therapy, you will undergo low-dose chemotherapy in order to prepare for treatment. CAR T may also be an option for patients not eligible to receive a stem cell transplant.

## SUPPORTIVE CARE (OR PALLIATIVE CARE)

During each phase of cancer treatment, you may receive care that focuses on your quality of life, versus treating your cancer. Supportive care helps with symptoms and side effects that you may experience due to your cancer or cancer treatments.

## IMPORTANT SAFETY INFORMATION, CONTINUED

**Before getting YESCARTA®, tell your healthcare provider about all your medical problems, including if you have or have had:**

- Neurologic problems (such as seizures, stroke, or memory loss)
- Lung or breathing problems
- Heart problems
- Liver problems
- Kidney problems
- A recent or active infection

**Tell your healthcare provider about all the medications you take, including prescription and over-the-counter medicines, vitamins, and herbal supplements.**

Please see additional **Important Safety Information** throughout this brochure.



## QUESTIONS FOR YOUR HEALTHCARE TEAM

Your healthcare team wants you to feel informed and comfortable with your treatment plan and will be happy to discuss any questions or concerns you may have. Share these questions to gain a better understanding of your cancer and your treatment options.

**Q** What types of treatments (if any) have I received so far?



---

---

---

---

**Q** What are my treatment options, based on the stage of my cancer, my phase in treatment, and overall health?



---

---

---

---

**Q** What treatment(s) do you recommend for me and why?



---

---

---

---

**Q** Are all my therapy options approved by the FDA?



---

---

---

---

**Q** Am I eligible to receive YESCARTA® CAR T therapy?



---

---

---

---

**Q** What are the benefits and risks associated with CAR T therapy?



---

---

---

---

**Q** What are the possible side effects of CAR T therapy?



---

---

---

**Q** Have different CAR T therapies provided similar results in clinical studies? Are there any CAR T clinical study results that stand out compared to others?



---

---

---

**Q** CAR T therapy modifies my T cells to destroy cancer cells. What role do T cells play in my immune system?



---

---

---

**Q** How do we prepare for CAR T therapy? Should I make any changes to my diet or lifestyle before starting treatment?



---

---

---

**Q** How long does the CAR T therapy process take and what does it involve?



---

---

---

**Q** CAR T therapy is available at specialized hospitals. Where can I find an Authorized Treatment Center with YESCARTA®?



---

---

---

**Q** How much will I have to pay for treatment? Will my insurance cover any of it?



---

---

---

 Use this area to write down any additional questions you'd like to discuss with your healthcare team



---

---

---

## IMPORTANT SAFETY INFORMATION, CONTINUED

### How will I receive YESCARTA?

- Since YESCARTA is made from your own white blood cells, your blood will be collected by a process called “leukapheresis” (loo-kah-fur-ee-sis), which will concentrate your white blood cells.
- Your blood cells will be sent to a manufacturing center to make your YESCARTA.
- Before you get YESCARTA, you will get 3 days of chemotherapy to prepare your body.
- When your YESCARTA is ready, your healthcare provider will give it to you through a catheter placed into your vein (intravenous infusion). The infusion usually takes less than 30 minutes.
- You will be monitored where you received your treatment daily for at least 7 days after the infusion.
- You should plan to stay close to the location where you received your treatment for at least 4 weeks after getting YESCARTA. Your healthcare provider will help you with any side effects that may occur.
- You may be hospitalized for side effects and your healthcare provider will discharge you if your side effects are under control, and it is safe for you to leave the hospital.
- Your healthcare provider will want to do blood tests to follow your progress. It is important that you do have your blood tested. If you miss an appointment, call your healthcare provider as soon as possible to reschedule.

### What should I avoid after receiving YESCARTA?

- Do not drive, operate heavy machinery, or do other dangerous things for 8 weeks after you get YESCARTA because the treatment can cause sleepiness, confusion, weakness, temporary memory and coordination problems.
- Do not donate blood, organs, tissues, and cells for transplantation.

### What are the possible or reasonably likely side effects of YESCARTA?

The most common side effects of YESCARTA include:

- Fever (100.4°F/38°C or higher)
- Low white blood cells (can occur with a fever)
- Low red blood cells
- Low blood pressure (dizziness or lightheadedness, headache, feeling tired, short of breath)
- Fast heartbeat
- Confusion
- Difficulty speaking or slurred speech
- Nausea
- Diarrhea

These are not all the possible side effects of YESCARTA. Call your healthcare provider about any side effects that concern you. You are encouraged to report negative side effects of prescription drugs to the FDA. Visit [www.fda.gov/medwatch](http://www.fda.gov/medwatch) or call 1-800-FDA-1088.

Please see accompanying full Prescribing Information, including **IMPORTANT WARNING**, and Medication Guide.





# UNDERSTAND YOUR OPTIONS

## TALK TO AN ONCOLOGIST WITH YESCARTA® EXPERIENCE

YESCARTA is available at Authorized Treatment Centers where medical staff are thoroughly trained and equipped to provide CAR T therapy.

Oncologists at Authorized Treatment Centers have the most experience with CAR T therapy and will be your most informed option for discussing YESCARTA.

**VISIT [getstartedwithYESCARTA.com](http://getstartedwithYESCARTA.com)  
TO FIND AN AUTHORIZED  
TREATMENT CENTER ONCOLOGIST**



If you need additional help finding an Authorized Treatment Center oncologist or have questions about eligibility, Kite Connect™, the YESCARTA support team, can help.

Call 1-844-454-KITE (5483), Monday–Friday, 5 AM–6 PM PT

 **YESCARTA®**  
(axicabtagene ciloleucel) Suspension  
for IV infusion

YESCARTA, the YESCARTA Logo, KITE KONNECT, the KITE KONNECT Logo, KITE, and the KITE Logo are trademarks of Kite Pharma, Inc. GILEAD is a trademark of Gilead Sciences, Inc.

© 2019 Kite Pharma, Inc. All rights reserved. | YESC0087 10/2019

 **Kite**  
A GILEAD Company  
Santa Monica, CA